

The Ranch



4

Wholesome Country Living



2

The Ranch offers wholesome country style in a large, open plan modular home, combining modern functionality with the classic elements that make a house a home.

Boasting generous sized rooms including 4 bedrooms and 2 bathrooms in total, a master suite with WIR and an ensuite.

**External
kit from:**
\$94,113

The Ranch complements comfortable and liveable interiors with a front veranda and alfresco area, highlighted by coffered ceiling to rear.

**Internal
kit from:**
\$51,214

The Ranch is ideal for families and includes several unique features designed with everyday living in mind such as an activity room, study, built-in double door linen storage and separate internal storage.

The Ranch design is often utilised on larger blocks and is well suited to rural living.

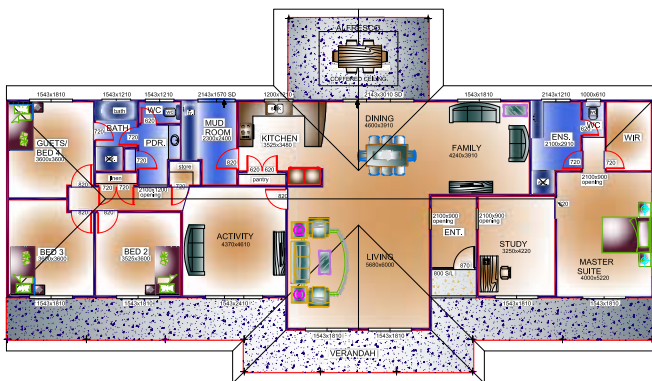
Kit Homes are ideal for urban or rural areas offering attractive design, coupled with functional architecture. A Kit Home can be designed and erected in a matter of weeks with modern features and additions such as home gyms, theatre rooms, spas and gourmet kitchens.

Kit homes are created with owner building in mind and offer an affordable housing solution to suit you and your family. Kit homes offer pre-fabricated components typically ideal for residential housing, which are more cost effective, as well as quicker to build.

108 Windsor Road, Wangara WA 6065

Phone: (08) 9409 2733

E: info@westkey.com.au | W: www.westkey.com.au



Features:

- ◆ Activity Room
- ◆ Internal Storage
- ◆ Alfresco area
- ◆ Open plan kitchen
- ◆ Living
- ◆ Study
- ◆ Can be supplied to suit cyclonic conditions (POA)
- ◆ Total area covered: 314.5m²
- ◆ Linen Storage
- ◆ Veranda
- ◆ Coffered ceiling
- ◆ Dining
- ◆ Family room
- ◆ Entrance
- ◆ Designed for 2.7m ceiling height

Eco Rating:

Supplied to comply with current BCA Energy Efficiency requirements

Specifications:

1. Designed and fully engineered for your site and built on a concrete pad or elevated floor system. (Elevated floor system extra to shown external kit picture)
2. Hi Tensile 89mm steel wall and roof framing.
3. Choice of external wall claddings: Colorbond, traditional weatherboard or modern fibre cement boards.
4. Colorbond roof sheeting with selected insulation to achieve the required minimum 5-star energy efficiency ratings

Choose one of our designs or have Westkey Modular Housing's qualified and experienced designers turn your ideas into your dream home in a matter of weeks!



108 Windsor Road, Wangara WA 6065

Phone: (08) 9409 2733

E: info@westkey.com.au | **W:** www.westkey.com.au